

FACTORY PROFILE

PLATINUM FASHIONS WEAR LTD

100% Export Oriented Knit Garments Factory

**FACTORY ADDRESS : TAGARPER -POLICE LINE –WEST ISDAIR ,
FATULLAH –NARAYANGANJ.**



OUR MISSION :

To be a leading provider of clothing to the Major Retailers in the USA, UK and Europe, we shall extend our hands to the buyers as unbeatable on quality, price, delivery and service.

OUR VISION :

Our Vision is to search for the news and information leading to update us with the knowledge of modern technology and in this way to bring about improvement in the quality of our products.

VALUES :

Conduct our business with the highest standards of ethics, trust and integrity.
Achieve a consistent and profitable growth.
Strive for excellence and feel proud in whatever we do as a company. Keep costs under control and eliminate wastage where possible.

HUMAN RESOURCE DEVELOPMENT :

Respect the dignity of each individual and nurture diversity.
Provide and maintain a stimulating and challenging environment for our employees.
Empower our employees to take on greater responsibility. Work as a team and work to be the best .

MESSAGE FROM THE MANAGING DIRECTOR :

PLATINUM FASHIONS WEAR LTD. understands the needs of the customer it serves innovative change the end users.

In order to achieving its position as one of the nations leading 100% Export Oriented readymade Knit garments manufacturing company. It is essential that we consistently meet our customers requirements and expectations for quality, performance, timeliness, cost of products and services.

The procedural outline of this followed during production of fabric and readymade garments. The products of PLATINUM FASHIONS WEAR LTD. are of international standard in order to ensure a consistent product quality for our valued customers. By practice this exercise customer requirements can be meet in timely and effective manner.

Another milestone in the company's consistent success was the assignment for developing all readymade garments. So it is true that within a short span of time PLATINUM FASHIONS WEAR LTD. has rapidly turned in to a successful player in production sector.

SHORT DESCRIPTION OF THE INDUSTRY :

The Industry is a 100% Export oriented readymade Knit garments industry located at TAGARPAR -POLICELINE FATULLAH , NARAYANGANJ . Its consists Knitting, Cutting, Sewing, Finishing and office with most Modern machinery in the same floor Premises.

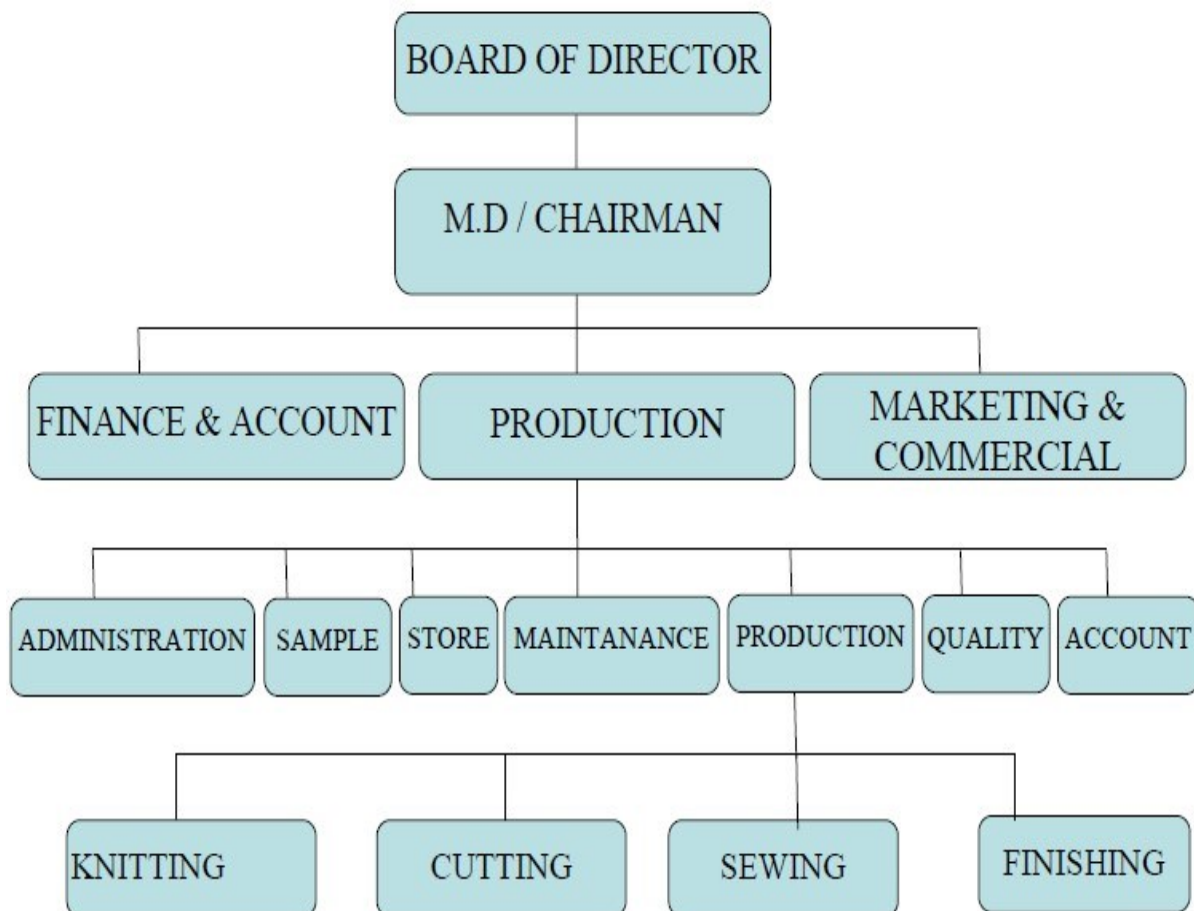
- a) Name of the industry : **প্ল্যাটিনাম ফ্যাশনস ওয়ার লিমিটেড** **PLATINUM FASHIONS WEAR LTD.**
- b) Address (Factory) : TAGARPAR ঙPOLICELINE- FATULLAH ঙ NARAYANGANJ.
- c) Status : Private Ltd. Company .
- d) Managing Director :
KM KAISER RINCU
- d1) Director : MOZAMMEL HOSSAIN
- e) Production Line : 8 Line .
- f) Banker : **THE PREMIER BANK .**
Account no : 111-0000-3852
NARAYANGANJ BRANCH , 56 , S.M. MALEH ROAD , AL-JOYNAL PLAZA (1st floor) TANBAZAR ,
NARAYANGANJ. SWIFT : PRMRBDDHNRG , Email : grpnarayangonjbranch@premierbankltd.com .
- g) Products : T-Shirt, Tank Top, Polo Shirt, Sweet Shirt, Shorts Under
Wear, Long Pant, Poller Fleece Etc.
- h) Floor Space : 36000 sft with modernize .
- i) Number of Machines : 200 set. with sample section.
- j) Number of Workers & Staffs : 420 Persons .
- k) Production Capacity : T-shirt 10000 pcs Per Day (6 Line)
Polo-Shirt 2000 pcs Per Day (2 Line)
- m) Lead time : 65/80 days upon confirmation of orders with all other details.
- n) Inspection Room : 2 Inspection room for Buyers.
- o) Sample Section : Its Consists with most modern machinery & space.
- p) Emergency Exit Signboard : Emergency Exit Sign board marked for easy evacuation.
- q) First Aid : First Aid boxes are kept in perfect place.
- r) Medical Facility : An M.B.B.S Doctor appointed for the treatment of worker.
- s) Child Labors : No child labors.

t) Fire Extinguisher : Placed in proper place.

MANAGEMENT BODY :

The factory management body is comprised of factory director , Merchandising Manager , Production Manager, Q.C. Manager & other support stuff of different categories. In fact factory director is responsible to run the total show. Factory is responsible to managing director of PLATINUM FASHIONS WEAR LTD. workforce in order to enhance their job performance capability. He is rendering his service in policy paining activity of this company. The organization structure is shown here.

ORGANISATION STRUCTURE OF "PLATINUM FASHIONS WEAR LTD."



MAN POWER POSITION :

Marketing & Merchandising Section

Merchandising Manager - - - 01

Merchandiser - - - - 03

Sample Section

Sample In- Charge - - - - 01

Pattern Master - - - - 01

Sample Man - - - - - 5

Cutting Dept

Cutting Manager - - - - 01

Cutting Master - - - - 01

Cutting Supervisor - - - - 01

Cutter Man - - - - - 03

Marker Man - - - - - 03

Numbering Man - - - - 04

Layer Man - - - - - 08

Bundle Man - - - - - 04

Cutting Quality Inspector - - 01

Sewing Section

P.M / A.P.M - - - - - 01

Floor In Charge - - - - 01

Supervisor - - - - - 5

Operator - - - - - 120

Helper - - - - - 140

Input Man - - - - 04

Quality Controller - - - 01

Line Quality Inspector - - - 06

Finishing Section

Finishing In Charge - - - - 01

Packing Helper - - - - 20

Quality Inspector - - - - 15

Iron Man - - - - - 08

Supervisor - - - - - 03

Folding Man - - - - - 08

Poly Man - - - - - 08

Quality Section

Q.C Manager - - - - 01

Quality Controller - - - - 06

Store & Others

Store In-Charge - - - - 01

Store Keeper - - - - 02

Mechanic - - - - 02

Time Keeper - - - - 02

Cleaner & Sweeper - - - - 11

Security Guard - - - - 06 Peon
- - - - 02.

Commercial & Accounts

Commercial Manager - - - 01

Commercial Officer - - - - 01

Accountant - - - - 01

Computer Operator - - - - 01

KNITTING-DYEING SECTION

KNITTING INCHARGE ½ 01

DYEING INCHARGE ½ 01

KNITTING-DYEING SUPERVISOR ½ 03.

TOTAL MAN – 415 PERSONS .

KNITTING SECTION : (Origin Taiwan)

Falmac Single Jersey, PK, Lacost, Haring Bone, Honey Comb.

Origin of Machine : Taiwan

Brand of Machine : Fukahama/Pai-lung Circular Knitting Machine .

POWER SYSTEM :

PDB Connection & Supported by a diesel generator.

Generator (☺KVA/☺KW) Pet bow diesel generator covers all floor Lighting, Cooling .

LIST FOR PRODUCTION MACHINERIES.

4 THREAD OVERLOCK	65SETS
FLAT LOCK	20SET S
CYLINDER BAD	20SETS
PLAIN MACHINE	70SETS
BACK TAPE	6SETS
BUTTON STITCH	2SETS
BUTTON HOLE	2SETS
SNUP BUTTON MACHINE	2SETS
CUTTING MACHINE	3SETS
RIB CUTTING	2SETS
ELASTIC ADJUST PMD MACHINE	1SETS
STEAM IRON	8SETS
TOTAL STAND BY GENERATOR	2SETS
NEEDLE DETECTOR MACHINE	1SET
WEIGHT MACHINE WITH CUTTING MACHINE	2SETS

SOME FACTORY PHOTOS :

OUT LOOK FACTORY



OFFICE



HR & ADMIN



CUTTING SECTION



INPUT RACK



ACCESSORIES STORE



PRODUCTION LINE

ACCESSORIES STORE





PRODUCTION LINE



FINAL ASSEMBLY

SOME FACTORY PHOTOS :

CHECKING IN OUT PUT



THREAD SUCKING



RIB CUTTING



IRON SECTION



QUALITY CHECKING



FOLDING AREA



PACKING AREA

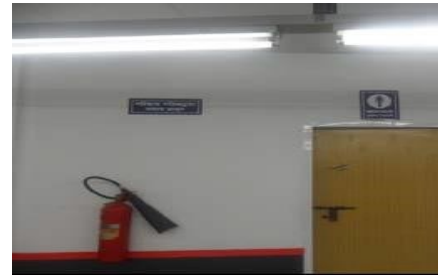


WARE HOUSE



INSPECTION ROOM

FIRE



EXTINGUISHER

PERFORMANCE WITH THE OVERSEAS BUYERS AT A GLANCE :

UK (WILSON) , DENMARK (BILKA) . FRANCE (SNC CAD) , AUSTRALIA (DISENEY) . NETHERLAND (US BASIC) . TURKEY (KOTON) , CHILE (URB) . AUSTRALIA (MAC GROUP) . FRANCE (CASINO) .
